

The logo for DURAMIT PVC ROOF TILE. The word "DURAMIT" is in a bold, blue, sans-serif font. The letter "A" is replaced by a graphic of several overlapping red roof tiles. Below "DURAMIT", the words "PVC ROOF TILE" are written in a smaller, red, sans-serif font.

**DURAMIT**  
PVC ROOF TILE

The text "PVC ROOF TILE" is centered in a white, sans-serif font against a dark blue background. Below this text is a close-up photograph of a row of brown, textured PVC roof tiles, showing their interlocking design and the way they catch the light.

PVC ROOF TILE

# PRODUCT INFORMATION

---

ASA coated DURAMIT PVC Panel Tile are manufactured with coextrusion technology and are special roof coating plates with 2-layers. As a top layer material ASA anti-climate coating is highly suitable for outdoor usage. ASA coated products preserve their colors and physical qualities for long years even when subject to UV rays, humidity, hot and cold weather conditions (hail, rain, snow, frost, etc.). They perform highly against corrosion.

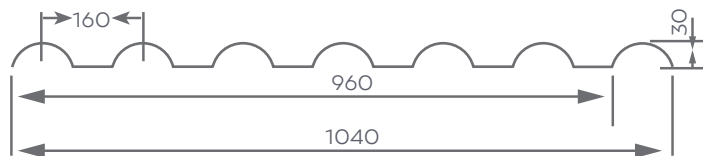
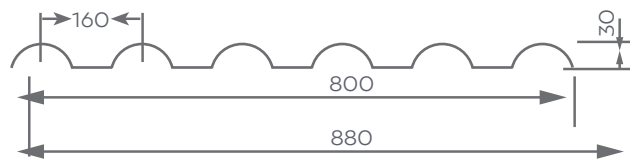
These products have numerous physical and visual advantages when compared to traditional roofings. Due to its unique performance DURAMIT PVC Panel Tile are suitable for usage in all kinds of applications and detail solutions in the construction sector primarily in housing.



# PRODUCT ADVANTAGE

	<p><b>COLOR GUARANTEE</b></p> <p>DURAMIT PVC Panel Tile are protected by ASA and research has shown that the color quality is preserved for over 20 years.</p>
	<p><b>ANTI-CORROSION</b></p> <p>DURAMIT PVC Panel Tile are totally anti - corrosion and can last for long years without being destructed by chemicals like acids, alkali and salt along with industrial emmissions.</p>
	<p><b>SOUND INSULATION</b></p> <p>DURAMIT PVC Panel Tile's physical qualities have a superior performance in sound insulation which are 10%-15%.</p>
	<p><b>ELECTRICAL INSULATION</b></p> <p>Due to their structure DURAMIT PVC Panel Tile are not conductive.</p>
	<p><b>RESISTANCE TO HIGH AND LOW TEMPERATURES</b></p> <p>Due to its manufacturing technology, DURAMIT PVC Panel Tile are usable inbetween a larger range of temperatures. These tile preserve their physical qualities between -40 and 90 C. Thanks to its polimer structure snow and ice can't stay on it for long.</p>
	<p><b>FIRE CLASS</b></p> <p>DURAMIT PVC Panel Tile are of B1 incombustibility class.</p>
	<p><b>WEIGHT</b></p> <p>DURAMIT PVC Panel Tile are 10 times lighter compared to clay tile (4,50 kg/m).</p>
	<p><b>HYGIENE</b></p> <p>Due to the lotus effect, DURAMIT PVC Panel Tile are self-cleaning with precipitation, they are dirt-free, hygenic. They are antibacterial.</p>
	<p><b>ENVIRONMENT</b></p> <p>DURAMIT PVC Panel Tile are 100% recyclable thus environmentally friendly.</p>

## 3 DIFFERENT WIDTH OPTIONS

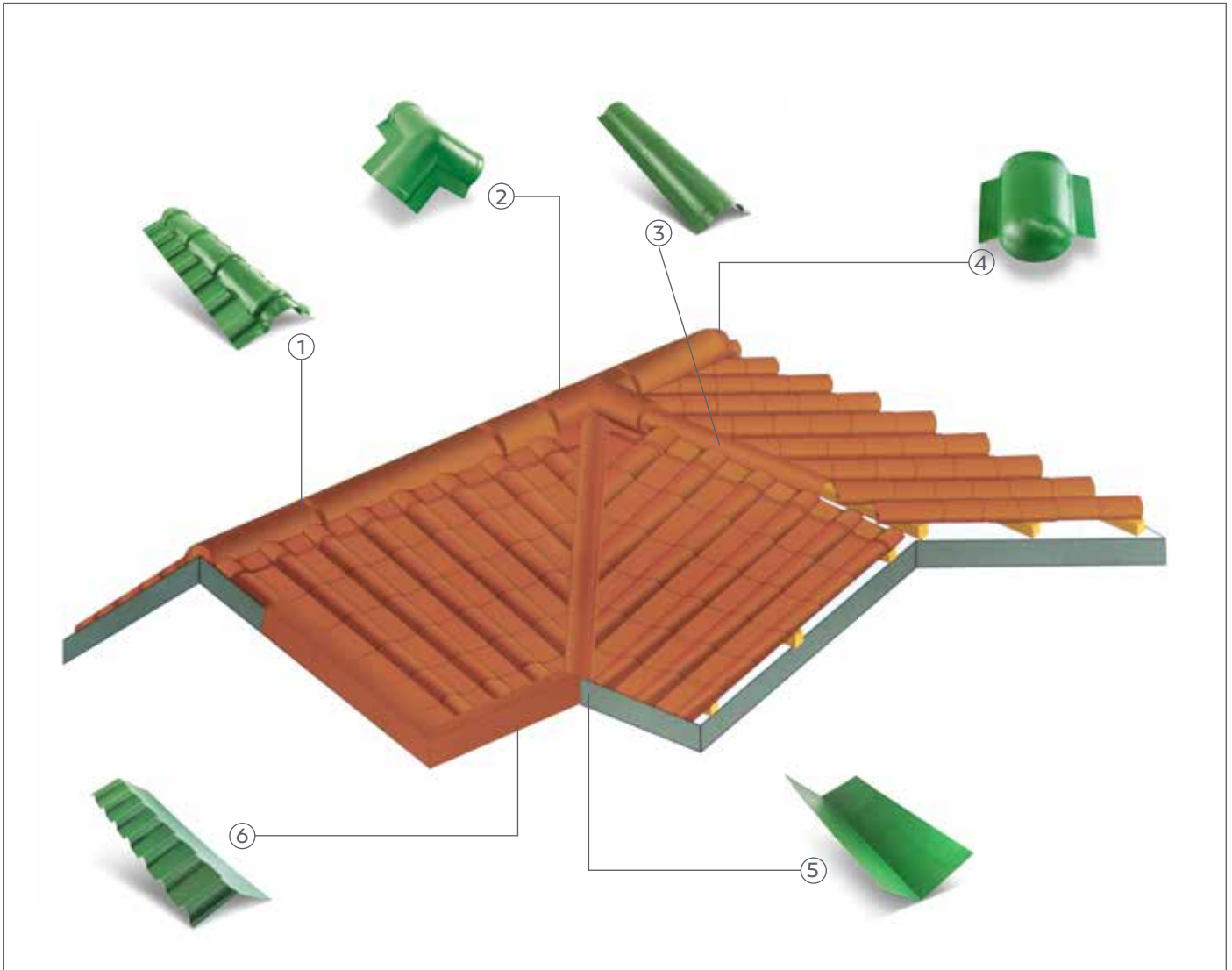


### **DURAMIT 720 - 880 - 1040**

Standard tile length	: 2190 mm/ 6120 mm
Width	: 720 mm / 880 mm/ 1040 mm
Working width	: 640 mm / 800 mm /960 mm
Panel length	: 2190 mm.... 6120 mm (2190 mm and its multiples)
Purlin space	: 660 mm
Thickness	: 2.5 mm, 3.0 mm

From 2190 mm to 6120 mm  
**VARIOUS LENGTH  
OPTIONS**





1- Ridge Unit

2- 3-way Ridge (160 degree angle)

3- Diagonal Ridge

4- Terminal Ridge

5- L shape Barge Board

6- Outer Diagonal Side Terminal

**DURAMIT PVC PANEL SHINGLES STANDARD COLORS**



Red



Grey



Blue



Tile Red



Green

*Colors in the catalogue may differ from the real colors due to the differences in printing.*

# FITTINGS AND ACCESSORIES

Ridge Unit



Wall Connector



3-way Ridge  
(160 degree angle)



3-way Ridge  
(120 degree angle)



Headwall Flashing



Diagonal Ridge



Terminal Ridge



Terminal Diagonal Ridge



L Shape Barge Board



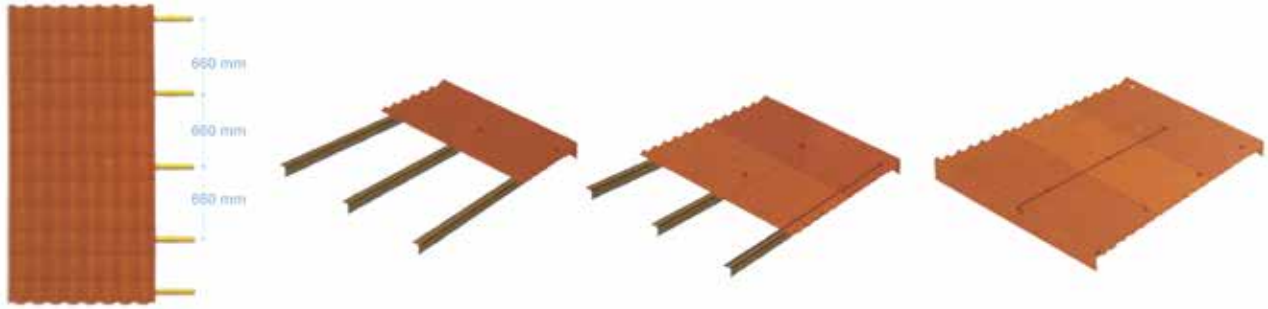
Terminal Inner Side Border



Terminal Outer Side Border



## APPLICATION OF DURAMIT PVC PANEL SHINGLES



Alignment is crucial for Duramit Panels. They can be closely and properly assembled. There are generally 3 types of building constructions; concrete, wooden and steel. Prior to the assembly, the proper screw should be chosen (wooden tip, metal tip, etc.). During the assembly a fixed chute should be utilized along with the screw.

After the primary alignment is complete, it should first be assembled on the horizontal construction, then the other panels should be screwed together after being added in the order of bottom-top and bottom again. The fixation components should be assembled above the pitch of the tile.



For the second row, just like in others, we would recommend to start with the left side of a longitudinally cut plate.

Thereby, the rows diagonally placed won't overlap with the four plates on the right side.



### TOP RIDGE PLACEMENT

The placement of the top ridge accessory should start from one side.

The first ridge should be cut in half to avoid overlapping of four tile where the DURAMIT PVC Panel Tile are one over the other.

The ridge accessory should be assemble on top of the main pvc panel tile with self-tapping screws.



### CORNER RIDGE

During its placement, the corner ridge should be aligned with the center line. The pre-formed corners should be fixed to the PVC panel tile cover with 75mm in length and 6.3 mm in diameter self-tapping screws. The corner ridge should be placed top-down by placing 50mm of the parts over one another.



### 3-WAY RIDGE

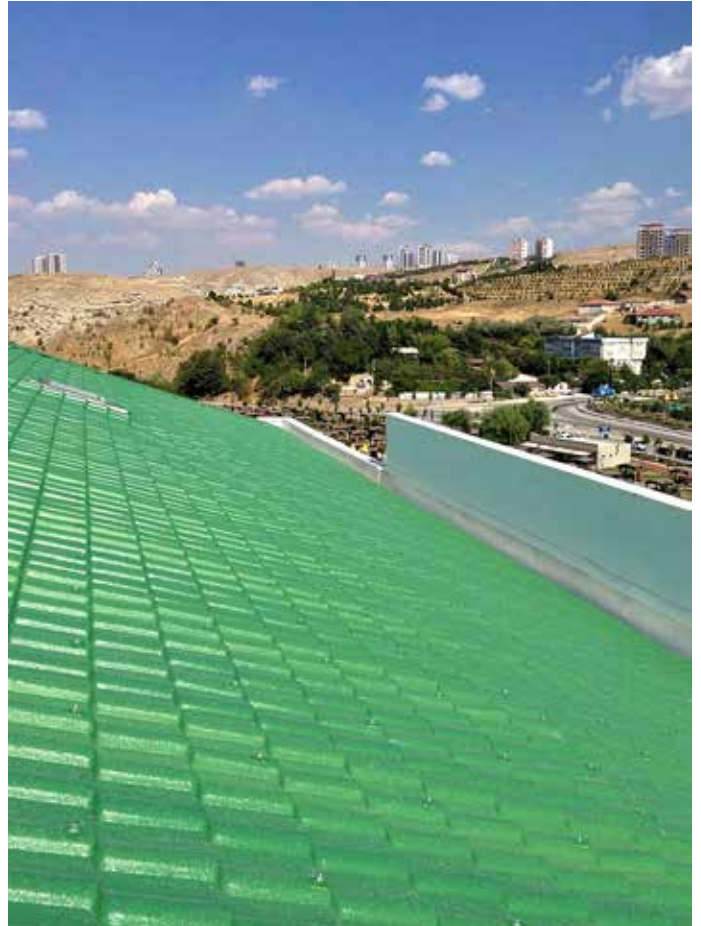
In a four-way inclined roof, a 3-way ridge is utilized as a connective element in between a flat ridge and a corner ridge.

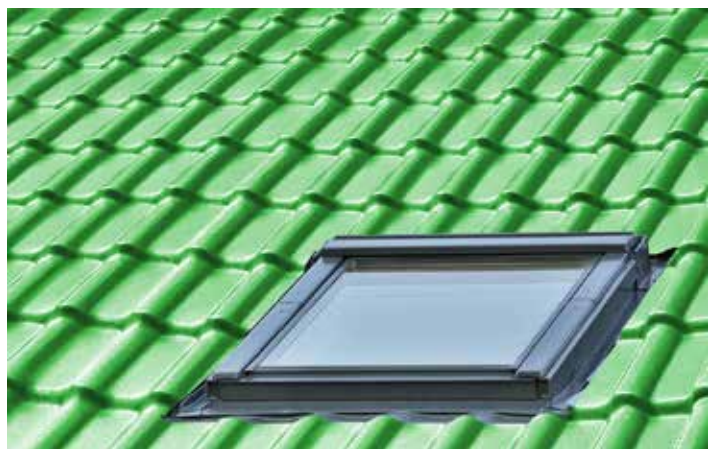


# ROOF EXAMPLES



# ROOF EXAMPLES







**DURAMIT**  
PVC ROOF TILE

Dudullu Organize Sanayi Bölgesi Nato Yolu Cad. No.11 34776 Dudullu - İSTANBUL / TURKEY

Tel : +90 216 528 27 00 info@duramit.com [www.duramit.com](http://www.duramit.com)

Lignadecor Üretim ve Pazarlama A.Ş.